



# Governance Structure

**Department of Prime Minister  
and Cabinet**  
Office for Women

**Governance Committee**  
YWCA CEO (Chair) and 2 independent members, 1  
finance and risk skills, 1 gender economist

**Working for Women Alliance (WWA) Executive Team**  
Executive Director  
Gender and Equality Director

**WWA Membership**  
Open to women with  
lived experience,  
individuals who are  
subject matter  
experts and  
organisations from  
the women's sector

**Affiliate  
Organisations**  
These are non-  
member  
organisations that  
collaborate with the  
Alliance on specific  
policy and subject  
matter areas

**National Women's  
Equality**  
Policy and Advocacy  
Advisory Committee

**National Women's  
Safety**  
Policy and Advocacy  
Advisory Committee

**Economic Equality  
and Security**  
Working Group

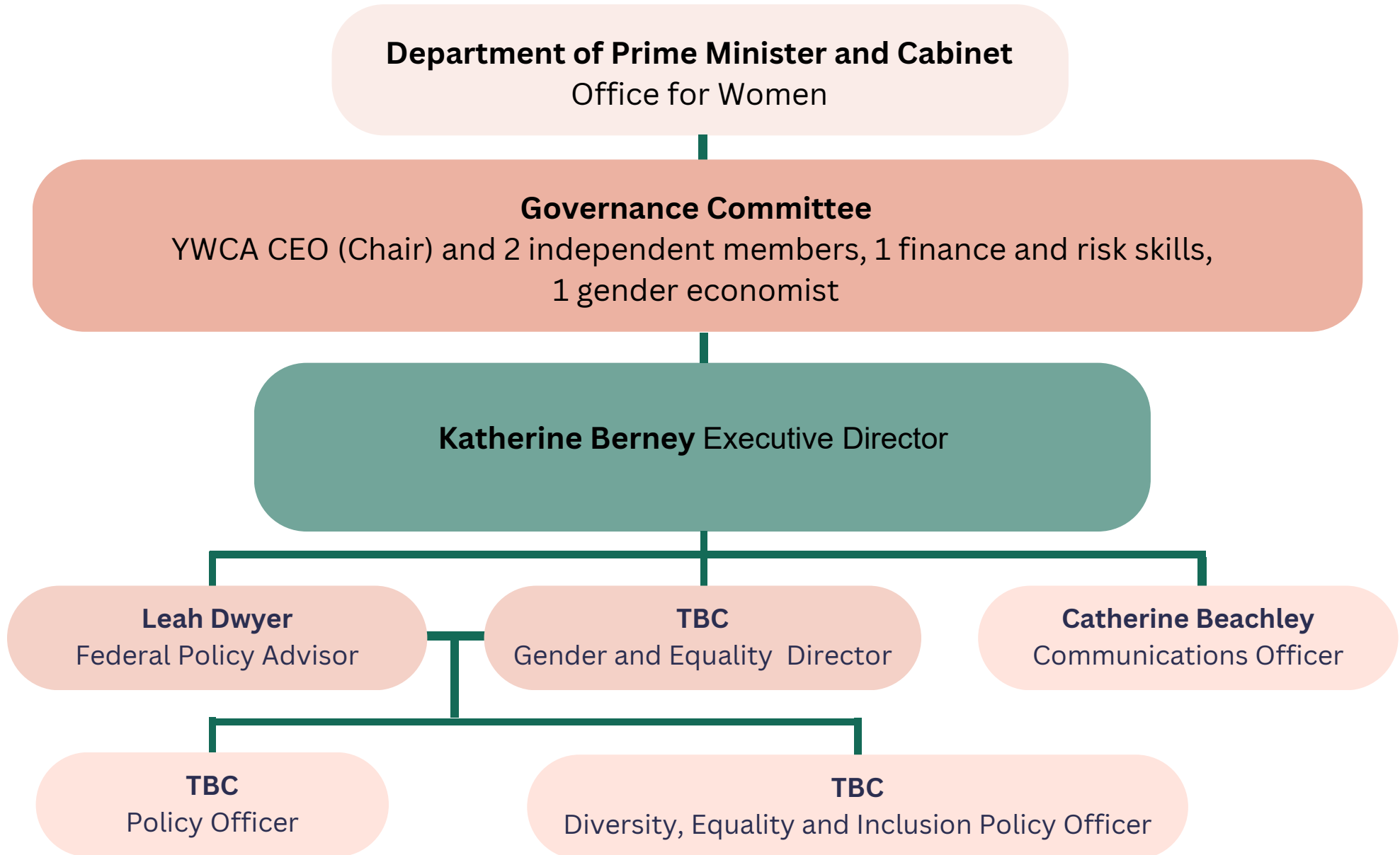
**Paid and Un-Paid  
Labour**  
Working Group

**Gender-Based  
Violence**  
Working Group

**Health and  
Leadership**  
Working Group



# Organisational Structure





### 1. Consultation Triggers

- WWA priorities developed by the National Women's Safety and National Women's Equality Policy and Advocacy Advisory Committees
- Priority areas outlined in Working for Women: A Strategy for Gender Equality
- Emerging social and policy issues
- Government requests and submissions

### 2. Analysis

- Policy and best-practice analysis.
- Analysis through gendered and intersectional lens, evaluating how policies affect individuals differently based overlapping identities, such as race, gender, class, and ethnicity.

### 3. Consultation

- PAAC Committees
- NWE & NWS Working Groups
- Membership

### 4. Writing and drafting

### 5. Decision

### 6. Submissions

- Reports
- Policy Submissions
- Inquiries

### 7. Evaluation

- Evaluation of process and outcomes by Policy and Advocacy Advisory Committees